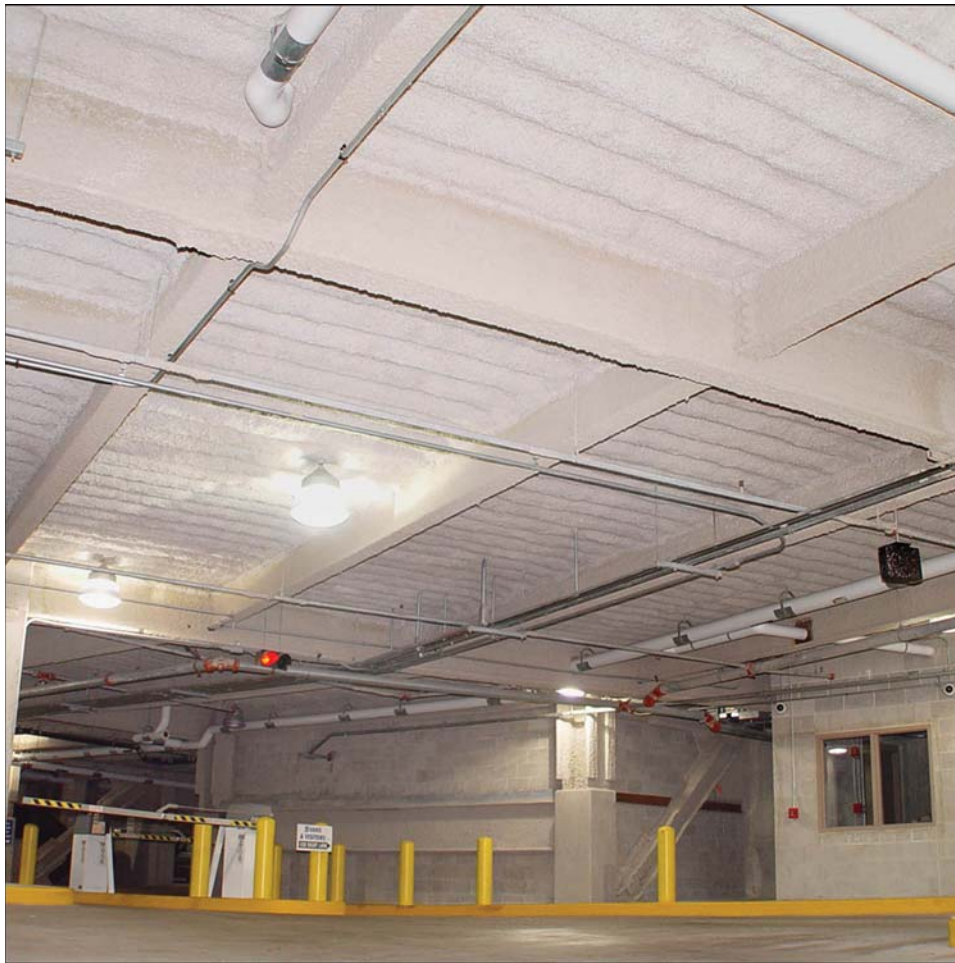


PROJECT PROFILE

Blue Cross and Blue Shield



PROJECT

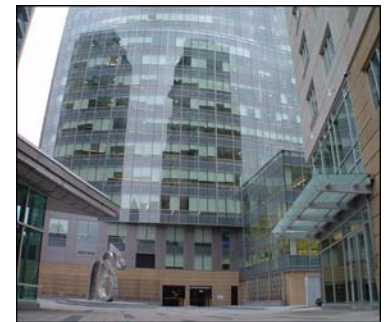
Blue Cross and Blue Shield
Exchange Street
Providence, RI

ARCHITECT

SMMA
1000 Mass Avenue
Cambridge, MA

DETAILS

K-13 Light Grey
42,960 Square Feet
4.04" Thickness



Blue Cross and Blue Shield insured they would not have cold floors in their new Providence Rhode Island Headquarters by utilizing K-13. Applied at 4.04" in Light Grey to match the cementitious fireproofing, the K-13 is providing a monolithic coating of R-19. K-13 (Ure-K) was also utilized in the exterior walls over foam to provide the required 15 minute ignition delay. For more information regarding K-13 call 508-678-1118 or visit our web site @ www.atiincorporated.com.

