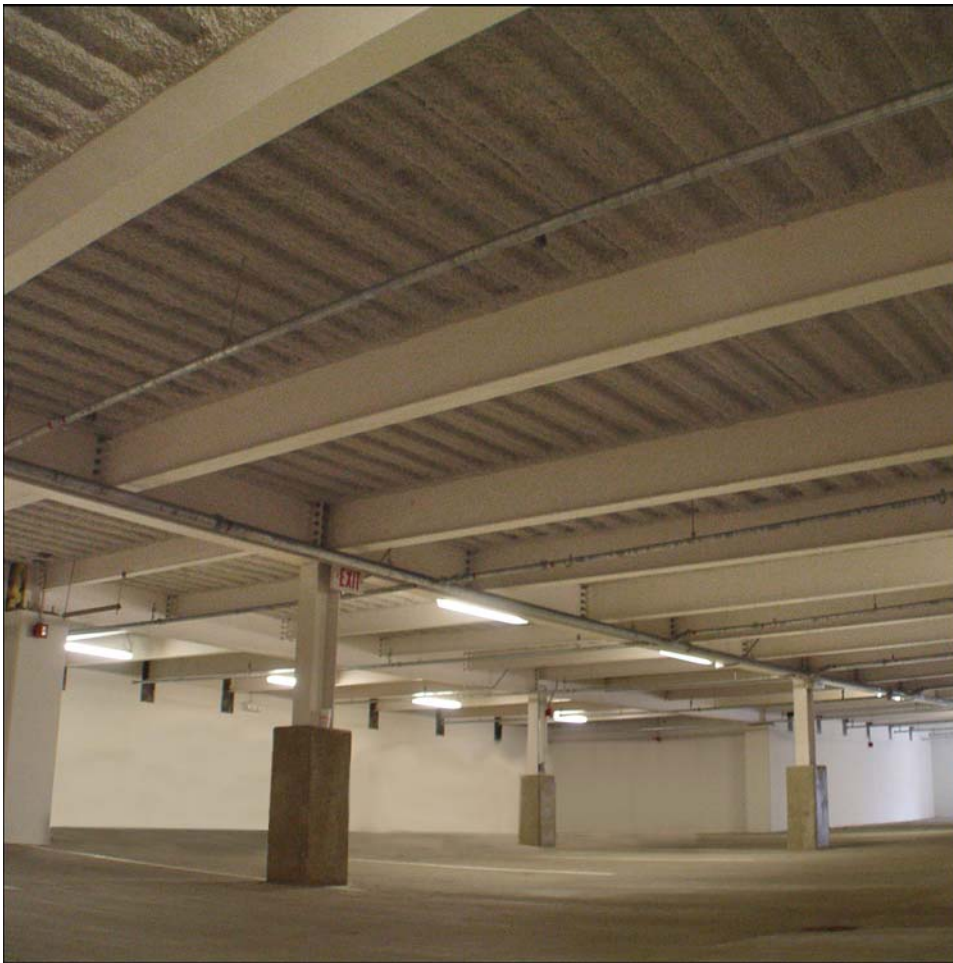


PROJECT PROFILE

Trapello Road Office Building



PROJECT

Parking Garage
1560 Trapello Road
Waltham, MA

ARCHITECT

Kling Stubbins
1030 Mass. Ave.
Cambridge, MA

DETAILS

K-13 Light Grey
22,400 Square Feet
1.5" Thickness



You don't see this type of application often, but when your tenants are #1, you do what you have to. This application of K-13 is applied in a parking structure with no building above. Due to the temperature difference generated from the cars in this unheated garage, extreme condensation was forming on the fluted metal deck and dripping constantly on the cars below. K-13 applied a 1.5" has moved the dew point off the metal surface, and the condensation issue is now a thing of the past. For more information regarding K-13 call 508-678-1118 or visit our web site @ www.atiincorporated.com.

